

Disney • PIXAR  
**FINDING  
 DORY**

IN THEATERS JUNE 17

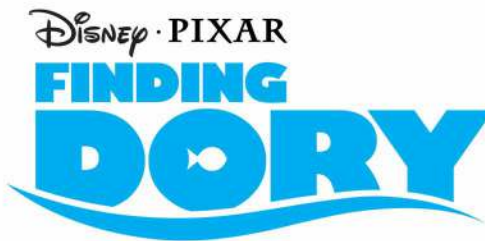
# MEMORY MATCH

Have an adult cut out the cards from all six pages. Fold each card on the indicated line and glue or tape the inside to make a two-sided card with the logo on one side and the character on the other. Place the cards character side down on a smooth surface and mix them up. Turn over two cards at a time to see if they match. If they don't, turn them face down again. Take turns turning over cards using your memory to recall where a matching card may be located. The person who matches the most pairs wins!



**HANK**

FOLD



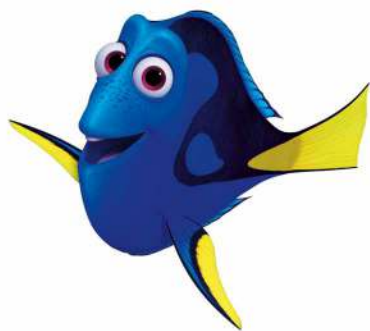
FOLD



**HANK**

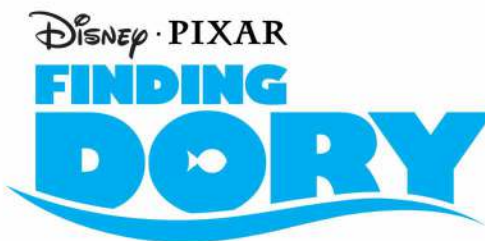


FOLD



**DORY**

FOLD



**DORY**

Disney • PIXAR  
**FINDING  
DORY**

IN THEATERS JUNE 17

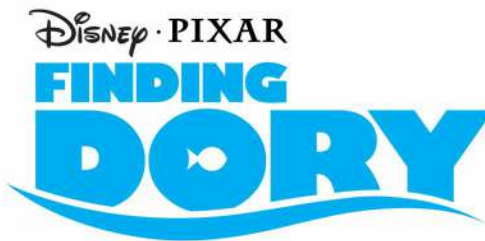
# MEMORY MATCH

Have an adult cut out the cards from all six pages. Fold each card on the indicated line and glue or tape the inside to make a two-sided card with the logo on one side and the character on the other. Place the cards character side down on a smooth surface and mix them up. Turn over two cards at a time to see if they match. If they don't, turn them face down again. Take turns turning over cards using your memory to recall where a matching card may be located. The person who matches the most pairs wins!



**BAILEY**

FOLD



FOLD

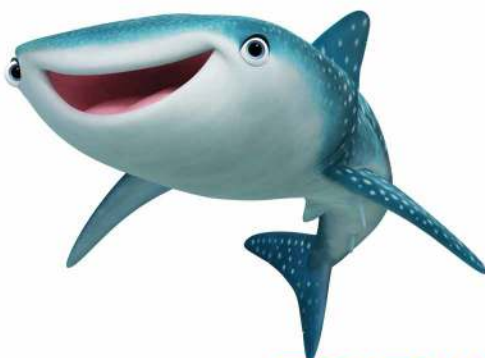


**BAILEY**



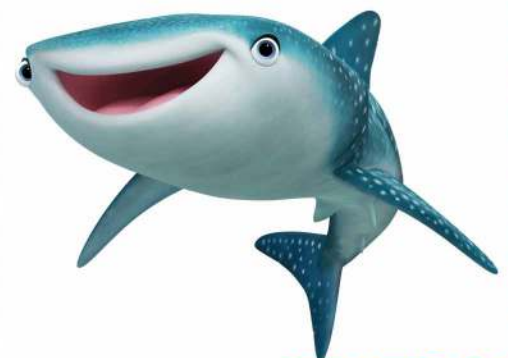
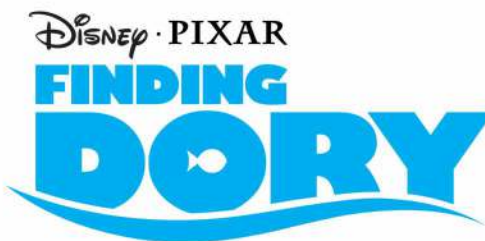
FOLD

FOLD



**DESTINY**

FOLD



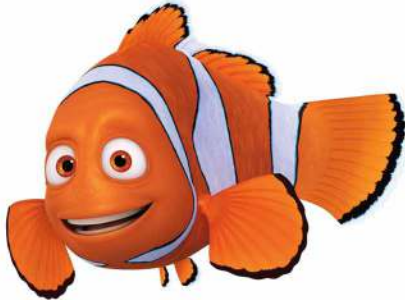
**DESTINY**

Disney • PIXAR  
**FINDING  
DORY**

IN THEATERS JUNE 17

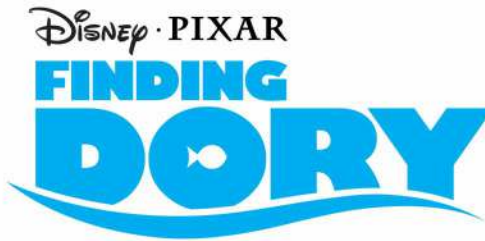
# MEMORY MATCH

Have an adult cut out the cards from all six pages. Fold each card on the indicated line and glue or tape the inside to make a two-sided card with the logo on one side and the character on the other. Place the cards character side down on a smooth surface and mix them up. Turn over two cards at a time to see if they match. If they don't, turn them face down again. Take turns turning over cards using your memory to recall where a matching card may be located. The person who matches the most pairs wins!

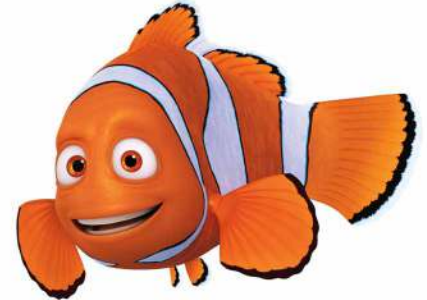


**MARLIN**

FOLD



FOLD



**MARLIN**

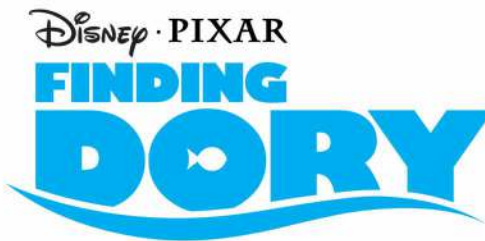


FOLD



**NEMO**

FOLD



**NEMO**

Disney • PIXAR  
**FINDING  
 DORY**

IN THEATERS JUNE 17

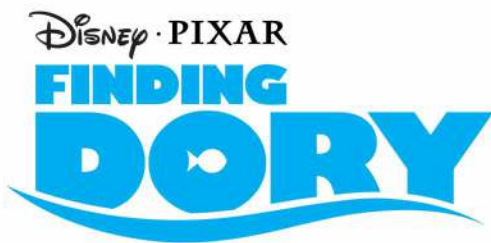
# MEMORY MATCH

Have an adult cut out the cards from all six pages. Fold each card on the indicated line and glue or tape the inside to make a two-sided card with the logo on one side and the character on the other. Place the cards character side down on a smooth surface and mix them up. Turn over two cards at a time to see if they match. If they don't, turn them face down again. Take turns turning over cards using your memory to recall where a matching card may be located. The person who matches the most pairs wins!



**MR. RAY**

FOLD



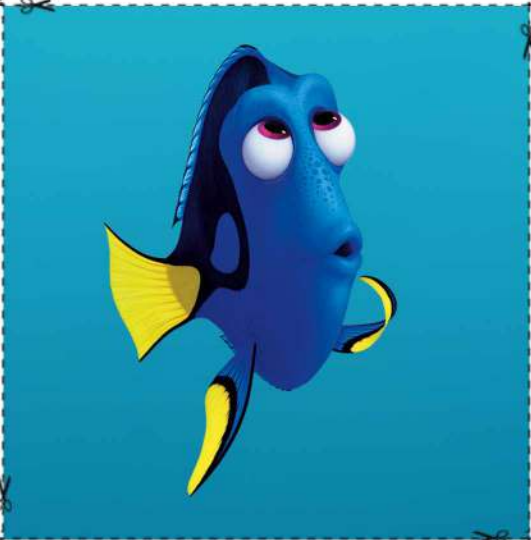
FOLD



**MR. RAY**



Disney • PIXAR



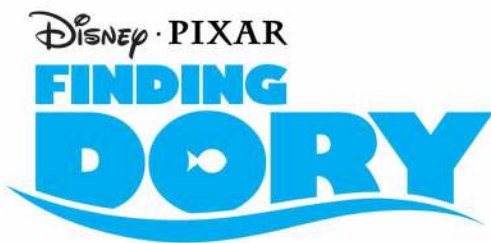
Disney • PIXAR

FOLD



**BECKY**

FOLD



**BECKY**

Disney • PIXAR  
**FINDING  
DORY**

IN THEATERS JUNE 17

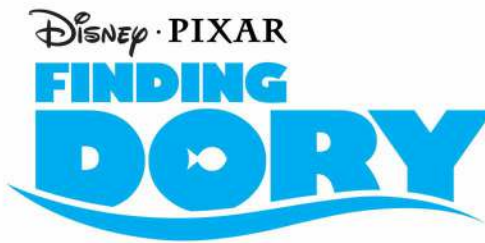
# MEMORY MATCH

Have an adult cut out the cards from all six pages. Fold each card on the indicated line and glue or tape the inside to make a two-sided card with the logo on one side and the character on the other. Place the cards character side down on a smooth surface and mix them up. Turn over two cards at a time to see if they match. If they don't, turn them face down again. Take turns turning over cards using your memory to recall where a matching card may be located. The person who matches the most pairs wins!



**CHARLIE & JENNY**

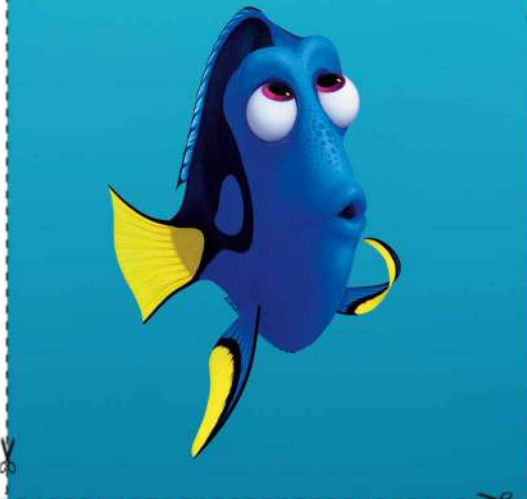
FOLD



FOLD



**CHARLIE & JENNY**

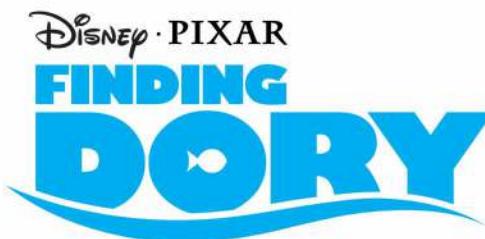


FOLD



**SQUIRT**

FOLD



**SQUIRT**

Disney • PIXAR  
**FINDING  
 DORY**

IN THEATERS JUNE 17

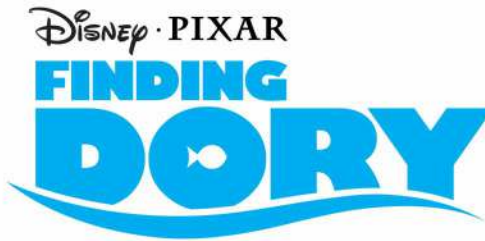
# MEMORY MATCH

Have an adult cut out the cards from all six pages. Fold each card on the indicated line and glue or tape the inside to make a two-sided card with the logo on one side and the character on the other. Place the cards character side down on a smooth surface and mix them up. Turn over two cards at a time to see if they match. If they don't, turn them face down again. Take turns turning over cards using your memory to recall where a matching card may be located. The person who matches the most pairs wins!



**CRUSH**

FOLD



FOLD



**CRUSH**



Disney • PIXAR



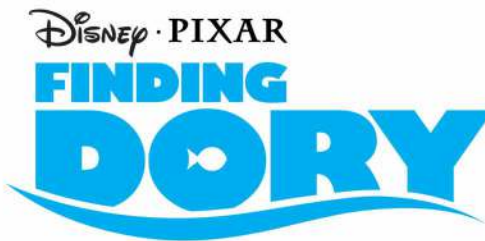
Disney • PIXAR

FOLD



**FLUKE & RUDDER**

FOLD



**FLUKE & RUDDER**

Disney • PIXAR  
**FINDING  
 DORY**

IN THEATERS JUNE 17

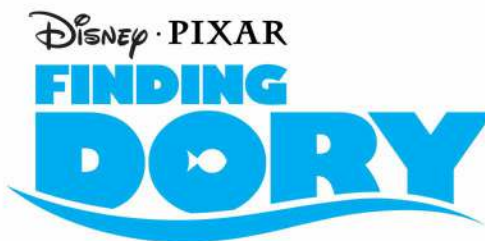
# MEMORY MATCH

Have an adult cut out the cards from all six pages. Fold each card on the indicated line and glue or tape the inside to make a two-sided card with the logo on one side and the character on the other. Place the cards character side down on a smooth surface and mix them up. Turn over two cards at a time to see if they match. If they don't, turn them face down again. Take turns turning over cards using your memory to recall where a matching card may be located. The person who matches the most pairs wins!



**OTTERS**

FOLD



FOLD



**OTTERS**



FOLD



**DORY & HANK**



**DORY & HANK**